



# Emmanuel Community

We create home for older adults, wherever they choose to live.

## Open House

**Thursday, September 15**

- ◆ *Lamplighter Manor & Home Care*  
1:30 - 2:30 pm
- ◆ *The Cottage & Adult Day Service*  
2:30 - 3:30 pm
- ◆ *The Madison & Home Care*  
3:30 - 4:30 pm

*Dear Family and Friends;*

*Thank you so much for taking time out of your schedule to attend recent Family Focus Group meetings. We received valuable feed back and information. We look forward to hosting ongoing focus group events.*

*I enjoyed hearing all the positive feedback of our great care and services.*

*Thank You,*

*Janet Green, Regional Director*

## Art Event

Emmanuel Community's "Art for the Ages" event was held on June 9th. This year's event showcased Native American Art & Culture.

Native artist's with extraordinary talents and belonging to various tribes throughout Minnesota were on hand with their artwork.



## 3000th Resident

Shirley Gunderson received this beautiful bouquet of flowers when she became the 3,000 resident to check into Emmanuel. Shirley was a staff member at Emmanuel from 1975 - 1995. Emmanuel was Shirley's first choice to recuperate and rehab after



her surgery. Shirley has successfully returned home after receiving great care. If you have questions about our post surgery/rehab

## "A Walk to End Alzheimers"

**Friday, September 9, 2011**

1:00 - 6:00 pm

A day of information, speakers and walking to raise money for Alzheimers research.

Union Central

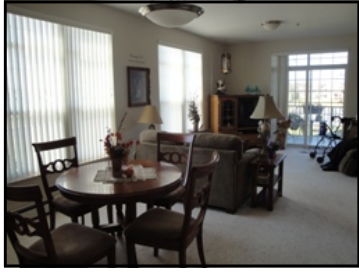
307 Lake Ave, Detroit Lakes.

The event kicked off with a tribal ceremony in Emmanuel's courtyard.

The ceremony included a Pipe Carrier, Lil Redtail Drum group, Anishinaabe Dancers in full dress and Irma Vizenor, White Earth Chairwoman, who shared a few words. Everyone enjoyed Native foods such as wild rice soup, fry bread, berries and earthy teas.

Miss Indian Nations, Evereta Thinn, of the Navajo Tribe of Arizona surprised us with a visit. She shared her culture and traditions and sang a beautiful Navajo song while playing a woven basket drum by tapping it with red willow.





**Openings Available**

**Services**

- Social activities
- Scheduled transportation
- Optional Home Care Services, up to full assisted living level of care

- Heated underground parking
- Laundry facilities
- Garden plots
- Secure building
- Pets allowed
- Utilities included
- Beauty Shop

**Features**

- 1 & 2 bedroom
- Private deck
- Full kitchen
- Community dining room
- Continental breakfast
- Meals
- Library & computer access
- Exercise room

Call Ashley to schedule a tour or for more details call 218-844-9420.

**“VoiceCare”** a 24/7 Response Line

For more information call Mel at 218-844-8354



**Thank You** to the Auxiliary and the Tree of Greeting donors. Our residents are enjoying the new soft serve ice cream machine. Join us on Fridays at 2:30 to share in the joy of ice cream.



1415 Madison Avenue  
 Detroit Lakes, MN 56501  
 218-847-4486

Visit us at our website: [www.emmanueldl.org](http://www.emmanueldl.org)  
 Ecumen's Changing Aging Blog - [www.changingagingblog.org](http://www.changingagingblog.org)

Tune in daily to “Celebrate Aging” on Channel 3 at 8:15, 12:15 & 4:15 am & pm  
[www.lakestv3.com](http://www.lakestv3.com)

# Regional Ombudsman

Our regional ombudsman is Jane Brink. If you have any questions or concerns contact Sue Sorensen, Licensed Social Worker; Cheryl Krause, Clinical Director; or Janet Green, Regional Director, at 218-847-4486.

Ombudsman contact information is:

Jane Brink, Regional Ombudsman  
 P.O. Box 361 Brainerd, MN 56401  
 Phone: 1-218-825-2005 1-800-657-3591  
 E-mail: [jane.m.brink@state.mn.us](mailto:jane.m.brink@state.mn.us)

# The Pines

At Emmanuel Nursing Home, "*The Pines*" is an Auxiliary-run gift shop. The majority of the items displayed are gently used and donated by members of Emmanuel's Auxiliary. Due to its great success in offering a shopping experience to the residents of Emmanuel, *The Pines* has "branched" out! An additional store space has been opened that concentrates on clothing items that again have been gently used and are received as donations. You are invited to shop at *The Pines* for cards and delightful gift items and also to shop at *The Pines Clothing Branch* to keep your wardrobe looking updated and stylish at an affordable price!

**July**

- 8th** Music with **Ken Baker**, Main Lounge, 2:30 pm
- 11th** Alzheimer's Support Group, \*FCC, 6:30 pm
- 14th** Stroke Support Group, Admin Conf Rm, 3 pm
- 28th** Parkinson's Support Group, \*FCC, 2 pm

**August**

- 8th** Alzheimer's Support Group, \*FCC, 6:30 pm
- 11th** **Watermelon & Music**, Main Lounge, 2 pm
- 11th** Stroke Support Group, Admin Conf Rm, 3 pm
- 25th** Parkinson's Support Group, \*FCC, 2 pm

**September**

- 8th** Stroke Support Group, Admin Conf Rm, 3 pm
- 9th** "A Walk to End Alzheimers", **Union Central** 1 - 6 pm
- 15th** **Housing, Home Care, & Adult Day Services Open House**, 2-4 pm
- 29th** Parkinson's Support Group, \*FCC, 2 pm  
 \*FCC- Forest Conference Center